

UCLA BANDS AND ORCHESTRAS FALL AUDITIONS: LIST C

TUBA

Please prepare the following for your audition.

SOLO REPERTOIRE

A solo selection of your choice (no accompaniment).

ORCHESTRAL REPERTOIRE

BERLIOZ Overture to Le Corsaire: to (required), to (optional)

BRAHMS Symphony No. 2: IV. to 15 mm. before

MAHLER Symphony No. 2: V. to 8 mm. after

RESPIGHI Le fontane di Roma: to

TCHAIKOVSKY Symphony No. 6: III. 7 mm. after to ; IV. to

Sightreading may be requested.

Hector Berlioz
Corsaire Overture

Tuba.

Allegro assai. (♩=152)

Adagio sostenuto. (♩=84)

Tempo I. Allegro assai.

The musical score for the Tuba part is presented across ten staves. The first staff shows measures 16, 14, 17, 5, 15, and 18, with a key signature change from C major to B-flat major. The second staff includes measures 19, 1, 2, and 6, with a key signature change to A-flat major. The third staff shows measures 5, 17, 6, 21, 7, 21, 8, 22, 9, 43, 10, and 11. The fourth staff includes measures 12, 13, 14, 15, 16, 17, 18, 19, and 20. The fifth staff shows measures 11, 6, 14, 12, and 3. The sixth staff includes measures 13, 21, 14, and 1. The seventh staff shows measures 1, 1, 1, 1, 1, and 1. The eighth staff includes measures 1, 1, 8, 15, and 16. The score includes various musical notations such as dynamics (f, ff, pp), articulation (accents), and repeat signs.

Allegro con spirito

Viol. 18 **A** 33 **B** 22 **C** *largamente*

81 16 **D** 24 **E** 16 **F** 17 **G** Viol. *p* 11

170 **H** Viol. Klar. 24 Viol. I 2

202 **I** *Tranquillo* 15 **K** *Sempre più tranquillo* 13 Pos. I. III Pos. II. *f*

238 3 *in tempo* 8 **L** 29 **M** *largamente* *pp* Viol.

284 40 **N** 24 Viol. *f*

353 **O** Solo *fp* *p*

361 *f*

370 10 Vcl. K.-B. Fag. **P** Hr. Trpt. *f*

388 *cresc.*

396 11 *f*

417 3 Pos. III *ff* *f*

The image displays a page of a musical score for the Tuba part of Brahms' Symphony No. 2 in D Major. The score is written in bass clef with a key signature of two sharps (D major). It includes various musical notations such as notes, rests, and dynamic markings (e.g., *pp*, *f*, *ff*, *p*). Tempo and mood markings like **Allegro con spirito**, *Tranquillo*, *Sempre più tranquillo*, and *largamente* are present. The score is divided into measures, with measure numbers (18, 33, 22, 16, 24, 16, 17, 11, 24, 2, 15, 13, 3, 8, 29, 40, 24, 353, 361, 370, 388, 396, 417) and rehearsal marks (A, B, C, D, E, F, G, H, I, K, L, M, N, O, P) indicated. Instrument labels include Viol., Viol. I, Viol. Klar., Pos. I. III, Pos. II., Vcl. K.-B. Fag., Hr. Trpt., and Trpt. The page number 3 is in the top right corner.

25 (= $\text{♩} =$) *ff*

26 *sehr kurz* *sempre cresc.*

27 *Langsam.* *Immer noch mehr* *Poco riten.* *(♩ = wie früher ♩ -)* *zurückhaltend.* *Noch mehr.*

28 *Più mosso.* *molto accel.*

Der grosse Appell.

29 *Sehr langsam und gedehnt.*

30 *Quasi Allegro.*

31 *Langsam.* *(Gemischer Chor.)* *rit.* *a tempo* *rit.*

32 *a tempo*

33 *Sehr breit.* *(1. Pos.)*

34

35 *Zurückhaltend.* *Riten.* *Langsam.*

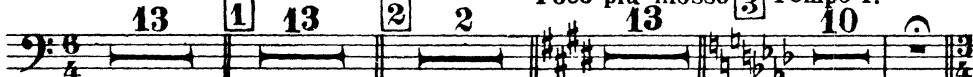
36 *Zurückhaltend.*

37 *Breit.* *a tempo* *(1. u. 2. Pos.)* *Zurückhaltend*

Ottorino Respighi Fountains of Rome


BASSO TUBA

La fontana di Valle Giulia all' alba.
Andante mosso 13 1 13 2 2 Poco più mosso 3 Tempo 1º 10



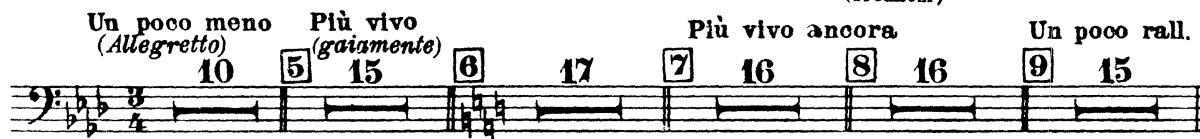
La fontana del Tritone al mattino.

Vivo 3 3 4 4 2 6



(Tromboni)

Un poco meno (Allegretto) 10 5 15 6 17 Più vivo (gaiamente) 7 16 8 16 Più vivo ancora 9 15 Un poco rall.



(Tromboni)

La fontana di Trevi al meriggio.

10 Allº moderato



11 Allº vivace



12



BASSO TUBA

3

13

14 Più vivo
(In uno)
(Ritmo di 3 battute)
fff

più f

15 (Ritmo di 4 battute)
fff

Largamente

fff

1 2 3 4 5 6 7

dim.

f dim.

16

mf dim.

17 Calmo
9 16
tacet al Fine

La fontana di Villa Medici al tramonto.

18 And^{te} 12

19 Meno mosso 16

20 11

21 And^{te} come prima 10

3 22 16 23 10

Tchaikovsky — Symphony No. 6 in B Minor, Op. 74 (Pathétique)

TUBA

5

189 Hr. *ff* T 7 U 1

206 V 1 *mp* *cresc.* W X *f* Y *fff* *pp* *p*

218 *fff*

231

236 1 Z

242 Aa

247

251 3 Bb 5 4 Cc 6 *fff*

274 Dd *fff*

279 Ee

283 *fff*

287 1

Tchaikovsky — Symphony No. 6 in B Minor, Op. 74 (Pathétique)

6

TUBA

Ff



Gg



Hh



Ii



Kk



Ll



Tchaikovsky — Symphony No. 6 in B Minor, Op. 74 (Pathétique)

TUBA

IV
Finale

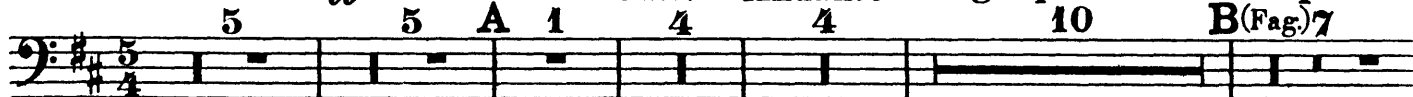
Adagio lamentoso

affrettando

rall.

Andante

Adagio poco meno che prima



Andante

(Hr.) 2 C 4

poco animando riten.

Tempo I

Pos. I

poco ani.



mando

Pos. II

riten.

Pos. I

Tempo I

poco animando

riten.

E Tempo I



animando

F



Più mosso

Stringendo



Vivace

Andante



Andante non tanto

G 13 H 5

Ob. *stringendo molto*

Trp. I



I Moderato assai

incalzando

riten. K Andante



6 (L

poco rallentando



quasi adagio

Andante giusto *riten.*

M 8 N 13 3

