

UCLA BANDS AND ORCHESTRAS FALL AUDITIONS: LIST C

PICCOLO

Please prepare the following for your audition, in addition to the required flute excerpts.

ORCHESTRAL REPERTOIRE

ROSSINI Overture to Semiramide: 5 mm. after Letter G to Letter H; 9 mm. after Letter N to Letter O; 8 mm. before Letter U to Letter U

SHOSTAKOVICH Symphony No. 10: I: Fig. 69 – end of the movement; IV. 1 m. before Fig. 162 to 10 mm. after Fig. 163

Sightreading may be requested.

Gioacchino Rossini
Semiramide Overture

Piccolo

Allegro vivace

24 A 8

mf *cresc.* *ff*

39

Andantino

19 C

ff

65

D 21 E

ff

92

12

p *cresc.*

108

F Allegro

7 b_2 8

f *f*

128

G 4

p

138

cresc.

142

H

f

148

I

155

161

fp *fp* *fp* *fp* *f* *ff*

This image shows the first system of a musical score, measures 292 through 385. The music is written for a single melodic line on a grand staff (treble and bass clefs). The key signature is one sharp (F#), and the time signature is 4/4. The score includes various musical notations such as eighth and sixteenth notes, rests, and dynamic markings including *fp*, *f*, *ff*, and *fp cresc.*. There are also performance instructions like *tr* (trill) and *acc* (accents). Measure numbers 292, 299, 304, 312, 331, 336, 349, 361, 367, 372, 376 II, 380, and 385 are indicated at the start of their respective staves. The system concludes with a double bar line and repeat dots.

SHOSTAKOVICH SYMPHONY NO. 10

I. MODERATO

♩ = 96

FLUTE PICCOLO

ФЛЕЙТА ПИККОЛО

8

ff espressivo

espressivo

a tempo

rit.

Celli, C-Bassi pp

pp

p

pp

p

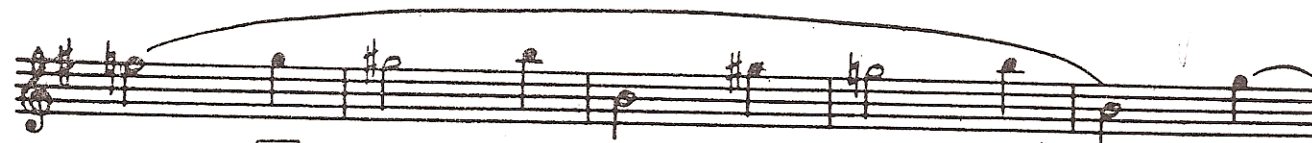
SHOSTAKOVICH SYMPHONY NO. 10

I. MODERATO (CONT.)

$\text{♩} \approx 96$

FLUTE PICCOLO
ФЛЕЙТА ПИККОЛО

7



70



non cresc.



morendo

II

71

Allegro $\text{♩} = 176$

20

Ob. II

72

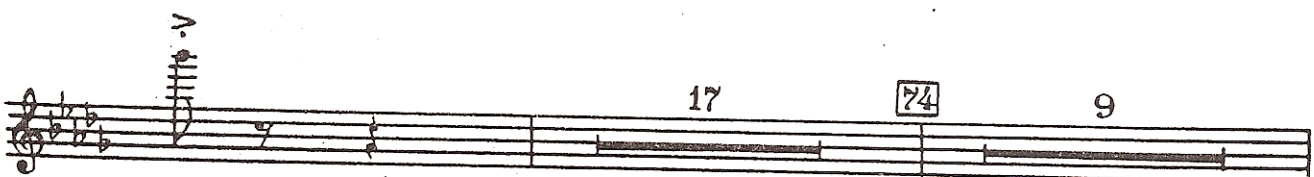


Picc.

ff



73



17

74

9

SHOSTAKOVICH SYMPHONY NO. 10

IV. ALLEGRO

$\text{♩} \approx 176$

FLUTE PICCOLO ФЛЕЙТА ПИККОЛО

19

159 11 160 cl. picc. Fl. picc. *f*

161 *f*

7 IN 2 162 *p*

163 *cresc.*

f

164 3