

## UCLA ORCHESTRAS FALL AUDITIONS: LIST D

### TRUMPET

Please prepare the following for your audition.

### SOLO REPERTOIRE

HAYDN Concerto for Trumpet: I. exposition; II. exposition (no accompaniment)

OR

Theo Charlier Etude No. 6 ("Du Style") from Etudes Transcendantes (PDF excerpt below)

### ORCHESTRAL AND BAND REPERTOIRE

BRITTEN Young Person's Guide to the Orchestra:

Variation K (in C); Fugue: K through 13mm. after M (in C)

COPLAND An Outdoor Overture: mm. 16–34 (in B flat)

HINDEMITH Symphony in B flat for band: Mvt. I; Beg. To Letter B

RESPIGHI Pines of Rome: II. Offstage solo (in C)

TCHAIKOVSKY Capriccio Italien: mm. 190–196; mm. 232–240 (Cornet I in A)

WAGNER Tannhäuser Overture: mm. 378–429 (in A)

**Sightreading may be requested.**

Theo Charlier, *Étude No. 6 "Du Style"* from *36 Études Transcendantes* (Excerpt)

Op. 6  
9 *Andante cantabile sans lenteur* (M.M. 63 = ♩)

*dolce*

*p*

*espressivo*

*f*

*f*

*p*

*f*

*poco a poco string. e cres.*

*sen do*

*senza string.*

*p*

*ad libitum*

*mf*

*rit.*

DISCLAIMER

Use of these PDF files is strictly for United States Navy Band auditions only. Any other use is not authorized by the United Navy Band. The user assumes responsibility for obtaining appropriate licenses in conjunction with any further use of copyrighted works

# THE YOUNG PERSON'S GUIDE TO THE ORCHESTRA

Benjamin Britten

(inc) VARIATION K (Trumpets)

**Vivace**

Side drum

stacc. sempre

pp cresc.

f

dim.

pp

2

f

dim.

(senza cresc.)

**FUGUE Allegro molto**

ff

ff

Picc. Av.

K

ff

cresc.

p

cresc.

f

p



Please include full details of title, composer, arranger and publisher of this work on THE PERFORMING RIGHT SOCIETY'S returns whenever it is publicly performed

# AN OUTDOOR OVERTURE

Solo & 1st Bb Cornet

AARON COPLAND

Tempo I.

Solo

*mp cant. freely with natural expression*

20

25

30

Più mosso

*p*

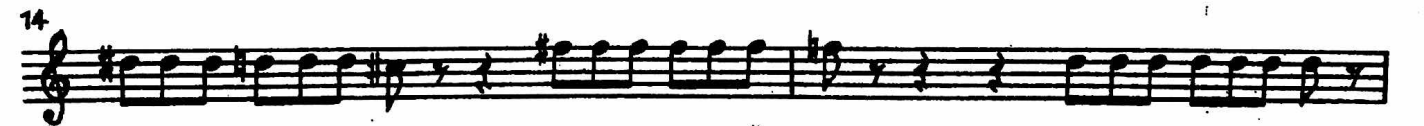
# Symphony in B flat

## Paul Hindemith

### Movement I

#### Beginning to letter B

1 Moderately fast, with vigor (♩ 88)



Musical score for three staves, likely piano accompaniment. The top staff has a treble clef and contains a melodic line with slurs and accents. The middle and bottom staves have treble clefs and contain rhythmic patterns, including a triplet in the first measure of each staff. Dynamics include *p* (piano) and accents.

Musical score for three staves, likely piano accompaniment. The top staff has a treble clef and contains a melodic line with slurs and accents. The middle and bottom staves have treble clefs and contain rhythmic patterns. Dynamics include *cresc.* (crescendo) and *f* (forte).

## II. Pini presso una catacomba

Più mosso  $\text{♩} = 60$   
 (il più lontano possibile)  
 (interna)

8)

Trpt 1 in C

*f ma dolce e espressivo*

Musical score for Trumpet 1 in C. It consists of three staves of music. The first staff starts with a treble clef and contains a melodic line with a triplet. The second and third staves continue the melodic line with slurs and accents. Dynamics include *f ma dolce e espressivo*.

Tchaikovsky — Capriccio Italienne, Op. 45

2

Piston I in A

147 **B** 1 1 2 3 4  
*mf* 3 3 3 3 3 3 3 3

152 5 6 7  
3 3 3 3 3 3

156 *ff*

163 3 \*2. Pos. **C**  
*f* *fff* *ff*

174 3 2  
3 3 3 3 3 3

180 **Allegro moderato** (♩ = 120)  
6 Viol. I Fl. **Solo**  
*f* *mf*

192 **D** 22 Viol. I  
*f* *mf*

220 \*3. Hr. 2  
*mf* *f* *mf* *f* *mf* *ff*

232 **E** *mf* *cresc.*

238 10 Hr. I  
*f* *dim.*

255 **Andante** (♩ = 132)  
*pp* 3 3 3 3



Ouvertüre  
zur Oper  
TANNHÄUSER

WAGNER

377 in A *M* assai stretto

390

402

417

430 *Più* stretto

*f* *ff* *ff* *ff*

Detailed description: This image shows a page of musical notation for the Overture to Wagner's opera Tannhäuser. The score is written on five staves of music. The first staff begins at measure 377, marked 'in A' and 'M assai stretto'. It features a melodic line with dynamic markings of *f* and *ff*. The second staff starts at measure 390 and continues the melodic line. The third staff starts at measure 402. The fourth staff starts at measure 417 and includes a triplet of eighth notes. The fifth staff starts at measure 430, marked 'Più stretto', and ends with a double bar line. The notation includes various note values, rests, and dynamic markings.